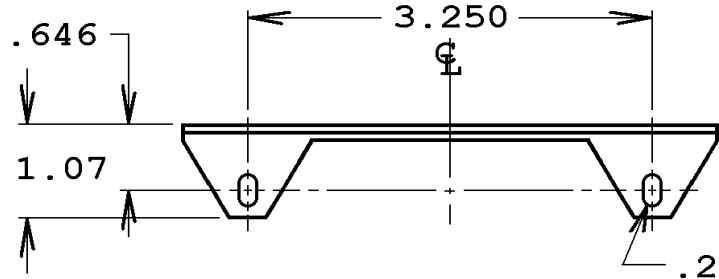


40-18036

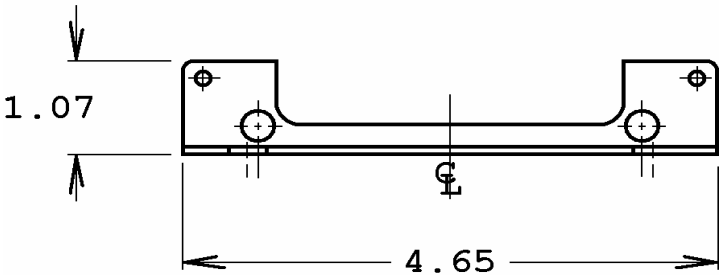
This drawing is the property of Magnetic Components, Inc. and shall not be reproduced, in whole or in part, without the written permission of Magnetic Components, Inc.

REVISIONS			
LTR	DESCRIPTION	DATE	APPROVED
A	ADD 40-18053 & 18067, B.O.M., HARDWARE SKETCHES	06/10/11	M. Sacketti
B	SCREWS WERE 2-1/4 LONG	04/23/12	M. Sacketti

BRACKET MATL : .0598 C.R.S.  
FINISH : ALL PARTS ZINC PLATED, RoHS COMPLIANT

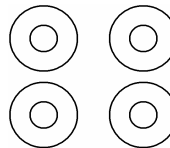


.219 X .438  
SLOT ±.005 (2PL)



**BILL OF MATERIAL**

- 2 BRACKETS
- 2 # 8-32 X 2-1/2 R.H.M.S.
- 2 # 8-32 KEPS NUTS
- 4 # 8 FLAT WASHERS



- USED ON :**
- 40-18023 50W POWER
  - 40-18024 100W POWER
  - 40-18026 100W OUTPUT
  - 40-18053 100W POWER
  - 40-18067 100W OUTPUT

UNLESS OTHERWISE SPECIFIED		<b>SIGNATURES</b>		<b>DATE</b>		<b>MAGNETIC COMPONENTS, INC.</b>		<b>DIV :</b>	
ALL DIMENSIONS IN INCHES DO NOT SCALE DRAWING		DRAWN : <i>M. Sacketti</i>		07 OCT 09		TITLE		LOC : SCHILLER PK	
FRACTIONS +/-		CHECK :				BRACKET SET, MARSHALL TRANSFORMER REINFORCING			
.X = +/-		APPR : <i>M. Sacketti</i>		07 OCT 09		CAGE 50508		SIZE PART No.	
.XX = +/-						SCALE NONE		A 40-18036	
.XXX = +/-								REV B	
ANGLES = +/-								SHEET :	